

STATE OF CALIFORNIA } 55  
 COUNTY OF CONTRA COSTA }  
 We, R.R. Arnold, County Surveyor and C.O. Masse, Recorder, respectively of Contra Costa County, State of California, do hereby certify that we have examined the property shown within the red lines of the herewith map as to its value for commercial or residential uses and state that we have no recommendations or suggestions to offer for the improvement of said subdivision.  
 IN WITNESS WHEREOF we have hereunto set our hands this 12th day of December, A.D. 1924.

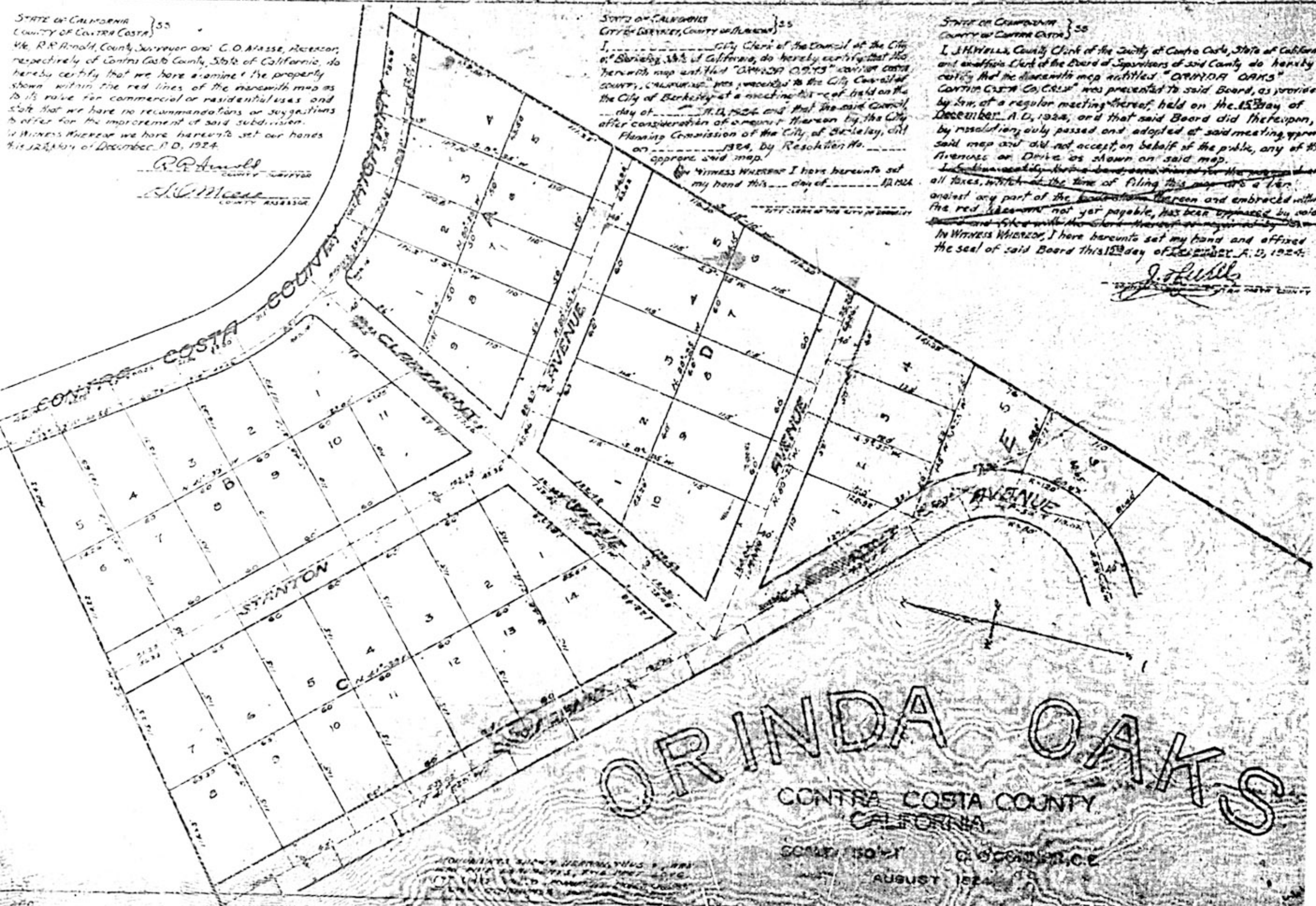
*R.R. Arnold*  
 COUNTY SURVEYOR  
*C.O. Masse*  
 COUNTY RECORDER

STATE OF CALIFORNIA } 55  
 CITY OF BERKELEY, COUNTY OF ALAMEDA }  
 I, \_\_\_\_\_ City Clerk of the Council of the City of Berkeley, State of California, do hereby certify that the herewith map entitled "ORINDA OAKS" Contra Costa County, California, was presented to the City Council of the City of Berkeley at a meeting held on the day of \_\_\_\_\_ A.D. 1924 and that the said Council, after consideration of a report thereon by the City Planning Commission of the City of Berkeley, did on \_\_\_\_\_ 1924, by Resolution No. \_\_\_\_\_ approve said map.

IN WITNESS WHEREOF I have hereunto set my hand this \_\_\_\_\_ day of \_\_\_\_\_ 1924.

STATE OF CALIFORNIA } 55  
 COUNTY OF CONTRA COSTA }  
 I, J.H. Wells, County Clerk of the County of Contra Costa, State of California, and an official Clerk of the Board of Supervisors of said County do hereby certify that the herewith map entitled "ORINDA OAKS" CONTRA COSTA Co., CALIF. was presented to said Board, as provided by law, at a regular meeting thereof, held on the 15th day of December, A.D. 1924, and that said Board did thereupon, by resolution, duly passed and adopted at said meeting, approve said map and did not accept, on behalf of the public, any of the provisions or Drive as shown on said map.  
 In addition, I have hereunto set my hand and affixed the seal of said Board this 15th day of December, A.D. 1924.

*J.H. Wells*  
 COUNTY CLERK



ORINDA OAKS  
 CONTRA COSTA COUNTY  
 CALIFORNIA

SCALE 150 FT. TO AN INCH  
 AUGUST 1924